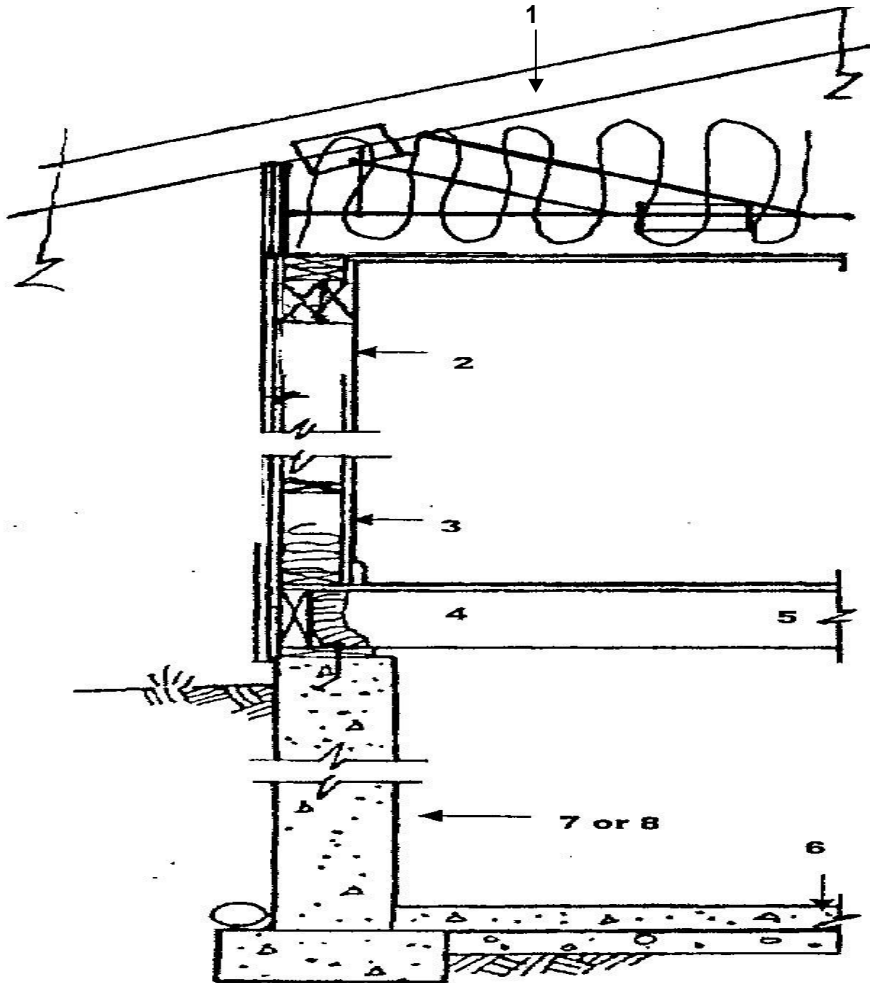


2015 MICHIGAN UNIFORM ENERGY CODE SIMPLIFIED PRESCRIPTIVE WORKSHEET

For complete requirements, consult chapter 11 of the 2015 Michigan Residential Code

INSULATOR: _____ JOB NAME (REQUIRED): _____



1. ROOF/CEILING: (Min R49)
 Energy Heel Conventional /Rafters _____ Standard Truss _____
 Material _____ Thickness _____ R _____

2. WINDOWS AND DOORS: (Max U.32)
 Windows % of walls _____ % U _____ R _____
 Skylights or
 Conditioned sunrooms _____ % U _____ R _____
 Doors _____ % U _____ R _____

3. ABOVE GRADE WALLS: (Min. R20)
 Cavity Material _____ Thickness _____ R _____
 Continuous Material _____ Thickness _____ R _____
Total R _____

4. RIM JOISTS (refer to walls): (Min. R20)
 Cavity Material _____ Thickness _____ R _____
 Continuous Material _____ Thickness _____ R _____
Total R _____

5. FLOORS OVER UNCONDITIONED SPACES: (Min. R30)
 Material _____ Thickness _____ R _____

6. SLAB ON GRADE: (Min. R10)
 Material _____ Thickness _____ R _____

7. CRAWL SPACE WALLS: (Min. R15) or (Min. R19-Cavity)
 Interior Material _____ Thickness _____ R _____
 Exterior Material _____ Thickness _____ R _____

8. BASEMENTS: (Min. R15 - Continuous) or (Min. R19 - Cavity)
 Continuous Interior Material _____ Thickness _____ R _____
 Continuous Exterior Material _____ Thickness _____ R _____
 Cavity Material _____ Thickness _____ R _____
Total R _____

Blower door testing is now required. A report of the test results must be submitted to this office before final inspection.

A permanent certificate shall be posted on the electrical panel stating insulation values.