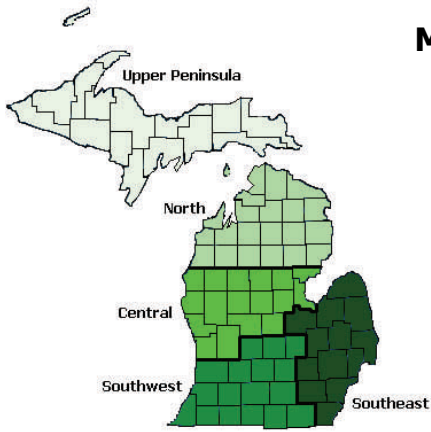


Michigan State University Extension



Michigan State University Extension (MSUE) helps people improve their lives through an educational process that applies knowledge to critical issues, needs and opportunities.

**For more information
Contact:**

**MSU Extension – Marquette County
184 US Highway 41 East
Negaunee, MI 49866
Phone: 906-475-5731
E-mail: msue52@msu.edu**

**This profile is brought to you by the
Michigan State University Extension and the
Community Development Area of Expertise Team
Helping build Michigan communities through interdisciplinary
and customer-focused educational programming and processes.**

Profile data sources: U.S. Census Bureau unless otherwise noted.

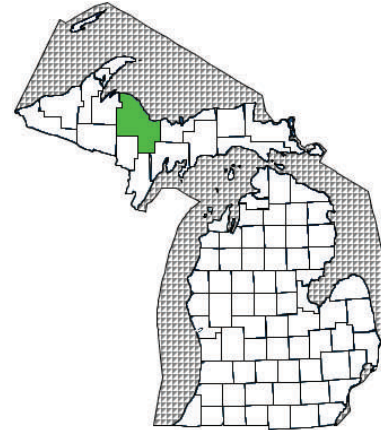
January 27, 2007

Michigan State University Extension programs and materials are open to all without regards to race, color, national origin, gender, religion, age, disability, political beliefs, sexual orientation, marital status or family status.

Michigan State University, U.S. Department of Agriculture and counties cooperating.
Michigan State University is an affirmative-action, equal-opportunity institution.

MICHIGAN STATE
UNIVERSITY
EXTENSION

Marquette County Profile

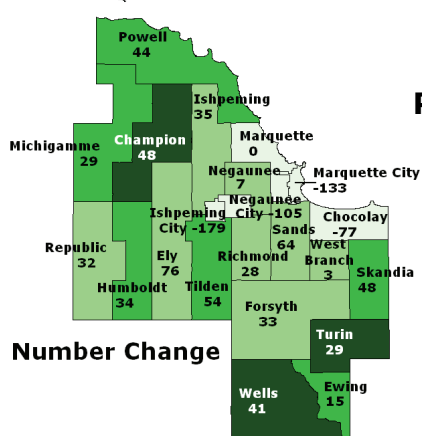


Brought to you by

**Michigan State University Extension
Community Development Area of Expertise Team**

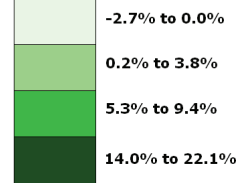
<i>Quick facts</i>	<i>Marquette County</i>	<i>Michigan</i>
Land area, 2000 (square miles)	1,821	56,804
Population, 2005 estimate	64,760	10,120,860
Housing units, 2004	33,828	4,433,482
Households, 2000	25,767	3,785,661
Median household income, 2003	\$36,993	\$46,291
Retail sales, 2002 (\$1000)	620,890	109,350,139
Median age, 2000	37.5	35.5

MICHIGAN STATE
UNIVERSITY
EXTENSION



Population Marquette County Population Change From 2000 Estimate Base * to 2005 Estimate

Percent Change



* These numbers may differ from the 2000 census data due to Census Bureau adjustments for boundary changes, population or geographic corrections.

Minor Civil Divisions & County Population	1990	2000	2005 Estimate
Marquette County	70,887	64,634	64,760
Champion township	346	297	345
Chocolay township	6,025	7,148	6,015
Ely township	1,946	2,010	2,086
Ewing township	156	159	174
Forsyth township	8,775	4,824	4,857
Humboldt township	500	469	503
Ishpeming city	7,200	6,686	6,507
Ishpeming township	3,515	3,522	3,557
Marquette city	21,977	19,661	20,581
Marquette township	2,757	3,286	3,286
Michigamme township	339	377	406
Negaunee city	4,741	4,576	4,471
Negaunee township	2,368	2,707	2,714
Powell township	660	724	768
Republic township	1,170	1,106	1,138
Richmond township	1,095	974	1,002
Sands township	2,696	2,127	2,191
Skandia township	933	907	955
Tilden township	1,010	1,003	1,057
Turin township	156	131	160
Wells township	281	292	333
West Branch township	2,241	1,648	1,654

Poverty

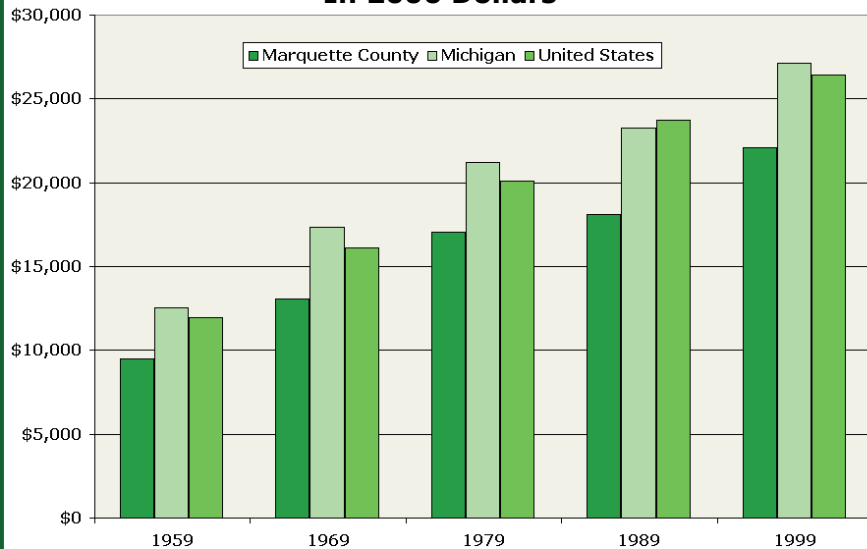
Poverty Rates Comparison	1989			1999		
	Marquette County	Michigan	United States	Marquette County	Michigan	United States
All Families	9.7	10.2	10.0	6.0	7.4	9.2
With related children under 18 years	13.1	16.0	14.9	10.5	11.3	13.6
With related children under 5 years	18.0	20.6	18.3	16.5	14.7	17.0
Families with female householder, no husband present	35.7	35.8	31.1	25.4	24.0	26.5
With related children under 18 years	45.9	48.1	42.3	33.4	31.5	34.3
With related children under 5 years	62.3	64.6	57.4	53.5	44.2	46.4
All Individuals	12.6	13.1	13.1	10.9	10.5	12.4
18 years and over	12.0	11.1	11.3	10.5	9.3	10.9
65 years and over	13.5	10.8	12.8	6.4	8.2	9.9
Related children under 18 years	14.0	18.2	17.9	11.2	13.4	16.1
Related children 5 to 17 years	12.1	16.7	17.0	9.5	12.7	15.4

In 1989 the poverty threshold for a household of four with two related children under 18 years was \$12,575. In 1999 the threshold for the same type of family was \$16,895.

Income

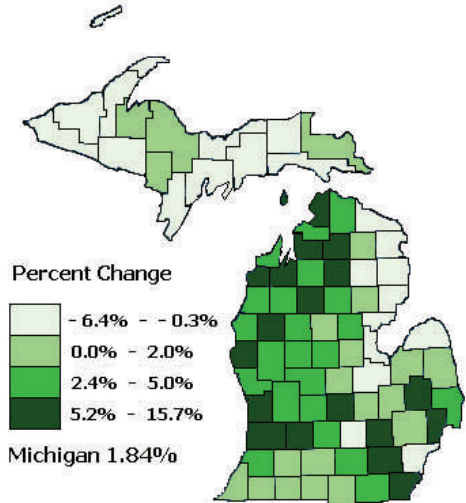
Household Income	Marquette County		Michigan	
	1989	1999	1989	1999
Less than \$10,000	18.1%	10.5%	15.6%	8.3%
\$10,000 to \$14,999	10.9%	7.6%	8.6%	5.8%
\$15,000 to \$24,999	20.7%	16.4%	16.4%	12.4%
\$25,000 to \$34,999	17.6%	14.8%	15.3%	12.4%
\$35,000 to \$49,999	18.2%	17.4%	18.7%	16.5%
\$50,000 to \$74,999	10.9%	19.3%	16.3%	20.6%
\$75,000 to \$99,999	2.0%	8.8%	5.4%	11.4%
\$100,000 to \$149,999	1.0%	3.4%	2.5%	8.6%
\$150,000 or more	0.5%	1.7%	1.2%	4.1%
Total Households	25,400	25,738	3,424,122	3,788,780
Median Household Income	\$25,137	\$35,548	\$31,020	\$44,667

Per Capita Income Comparison In 2006 Dollars



Source: The 1959, 1969, and 1979 values were brought to 1989 levels by the U.S. Census Bureau. Oct. 5, 2006 levels were calculated using the CGI calculator at <http://data.bls.gov/cgi-bin/cpicalc.pl>.

Michigan Population Change from 2000 to 2005 Estimate



Marquette County ranks 58 out of 83 in the state for population change from 2000 to 2005 estimate.

Education

Educational Attainment for Persons Age 25 and Over

	Less than 9th grade	9th to 12th grade, no diploma	High school graduate	Some college, no degree	Associate degree	Bachelor's degree	Graduate or professional degree
1990 Marquette County	6.7%	11.5%	35.7%	19.3%	6.5%	13.5%	6.8%
1990 Michigan	7.8%	15.5%	32.3%	20.4%	6.7%	10.9%	6.4%
1990 U.S.	10.4%	14.4%	30.0%	18.7%	6.2%	13.1%	7.2%
2000 Marquette County	3.7%	7.8%	35.3%	23.1%	6.4%	15.9%	7.8%
2000 Michigan	4.7%	11.9%	31.3%	23.3%	7.0%	13.7%	8.1%
2000 U.S.	7.5%	12.1%	28.6%	21.0%	6.3%	15.5%	8.9%

For the 2001–2002 school year, in Marquette County there were 53 high school dropouts or 1.7% and in Michigan there were 17,167 dropouts or 3.7%.

Source: Michigan Family Independence Agency

Population Composition

Marquette County			
Age Range	1990	2000	2005 Est
00-04	5,042	3,275	3,029
05-09	5,409	3,665	3,210
10-14	5,124	4,080	3,624
15-19	5,882	5,571	5,159
20-24	7,082	6,007	6,959
25-29	6,017	3,647	4,484
30-34	6,072	3,796	3,449
35-39	6,154	4,637	3,756
40-44	4,846	5,333	4,560
45-49	3,385	5,479	5,081
50-54	2,877	4,549	5,318
55-59	2,535	3,181	4,192
60-64	2,484	2,675	2,852
65-69	2,375	2,224	2,445
70-74	2,055	2,165	1,862
75-79	1,735	1,831	1,930
80-84	1,091	1,389	1,411
85+	722	1,130	1,439
County Total	70,887	64,634	64,760

In the 2005 estimate, Marquette County's population included 32,337 males and 32,423 females, or 49.9% and 50.1% respectively. For Michigan, males represented 49.2% and females 50.8%.

Median Ages

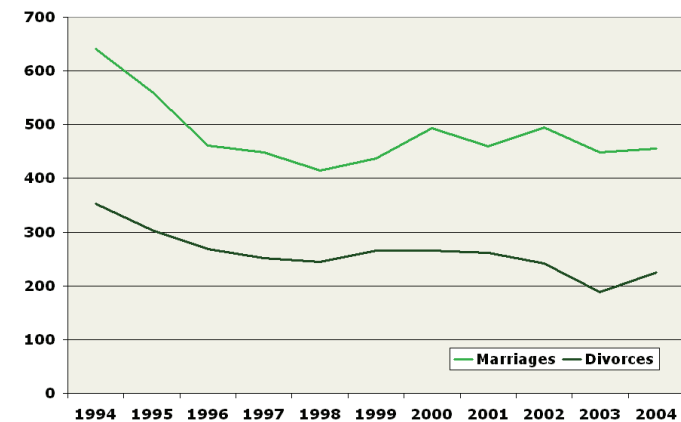
	1980	1990	2000
Marquette County	26.1	30.7	37.5
Michigan	28.8	32.6	35.5
U. S.	30.0	33.0	35.3

Households & Families

In 2000, Marquette County had

- 25,767 households and 16,480 families.
- 426 grandparents living in a household with one or more of their own grandchildren under 18 years and of these 191 grandparents were responsible for their grandchildren.
- 2,290 female householders with no husband present, and 1,509 of these households included children under 18 years.
- 2,709 householders 65 years and older.
- 3,173 children under age 18 living with a single parent. This represented 23.0 percent of all children in Marquette County. In Michigan, 24.5 percent of all children lived in single parent families.

Marriage and Divorce History in Marquette County

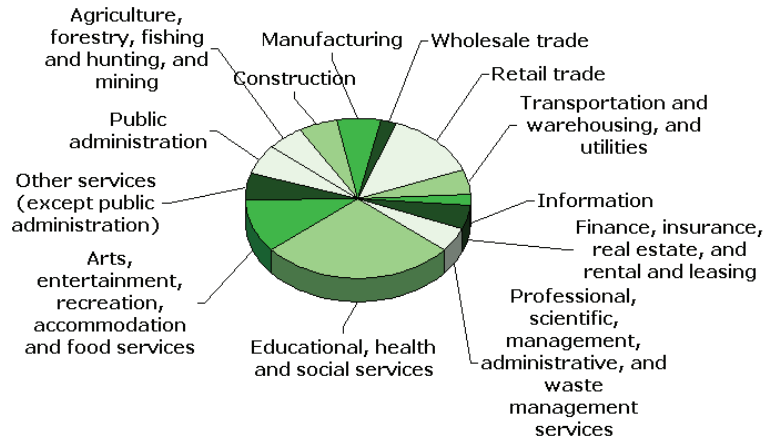


In 2004, there were 36,779 Michigan children involved in divorces and annulments.

Source: Michigan Department of Community Health

Employment

2000 Employment by Industry in Marquette County



Regional Employment Forecast for Michigan's Upper Peninsula	# of Employees		Growth Rate
	2002	Forecast 2012	
Total, Wage & Salary Employment	22,560	23,270	3.2%
Food Services & Drinking Places	10,100	11,340	12.4%
Hospitals	7,040	8,140	15.6%
Local Government, Excluding Education & Hospitals	14,200	15,100	6.3%
Educational Services	15,810	16,650	5.3%
Ambulatory Health Care Services	3,780	4,570	20.9%
Administrative & Support Services	1,960	2,700	37.5%
Social Assistance	2,390	3,050	27.5%
Accommodation	3,510	4,050	15.3%
Specialty Trade Contractors	2,930	3,310	13.1%

This chart displays the total for the region and some of the highest forecast growth industries by number of employees. For more information go to www.milmi.org, click on Industry Information and select Upper Peninsula.

Marquette County Population Composition

Population by Race and Hispanic or Latino Origin	1990	2000	2004 Est
White	68,027	61,679	61,823
Black	1,170	868	977
American Indian/Alaskan Native	943	980	1,006
Asian or Pacific Islander	538	334	362
Two or More Races	209	773	706
Total	70,887	64,634	64,874
Hispanic or Latino (of any race)	566	444	489

Of the 25,767 households in 2000, there were 1,408 unmarried partner households, of which

- 32 were male householder and male partner
- 734 were male householder and female partner
- 66 were female householder and female partner
- 576 were female householder and male partner

Urban and Rural Population	Year 2000
Total:	64,634
Urban:	37,526
- Inside urbanized areas	0
- Inside urban clusters	37,526
Rural:	27,108
- Farm	111
- Non-farm	26,997

Disability *	Year 2000
Total population 5 to 20 years	14,719
- With a disability	1,014
Total population 21 to 64 years	36,649
- With a disability	5,141
- Percent employed	47.4%
- No disability	31,508
- Percent employed	78.3%
Total population 65 years and over	8,103
- With a disability	3,116

* Civilian non-institutionalized population only

Labor Force

Where Marquette County Residents Work

Marquette County residents who worked in their own county:

	1980	1990	2000
Number	27,162	29,879	28,719
Percent	96.8%	96.1%	95.6%

Marquette County residents who worked outside their county of residence, but in Michigan:

	1980	1990	2000
Number	508	1,071	998
Percent	1.8%	3.4%	3.3%

Marquette County residents who worked outside Michigan:

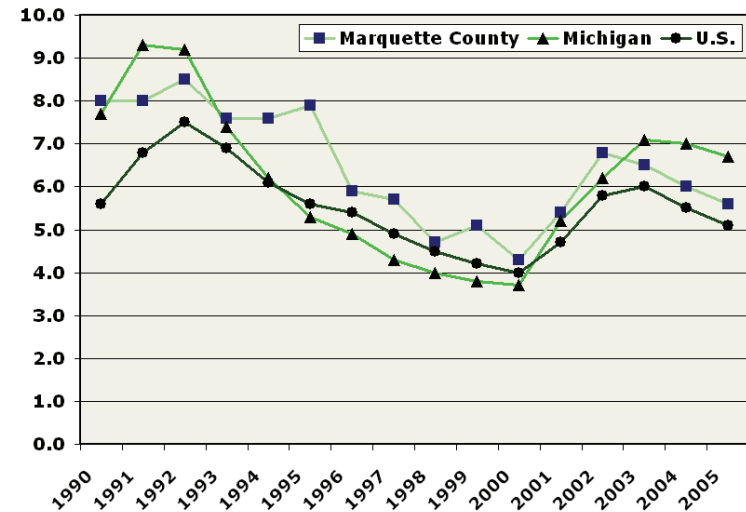
	1980	1990	2000
Number	376	153	328
Percent	1.3%	0.5%	1.1%

Analysis of Marquette County Women 16 Years and Older In the Labor Force in 2000

	Employed	Unemployed	Not in Labor Force
Women with children of their own, all under 6 years of age.	72.0%	2.3%	25.7%
Women with children of their own under 6 years of age and children of their own between 6 and 17 years.	62.7%	1.2%	36.0%
Women with children of their own between 6 to 17 years only.	81.8%	3.5%	14.8%
Women with no children under 18 years of age.	48.7%	2.8%	48.5%

Unemployment

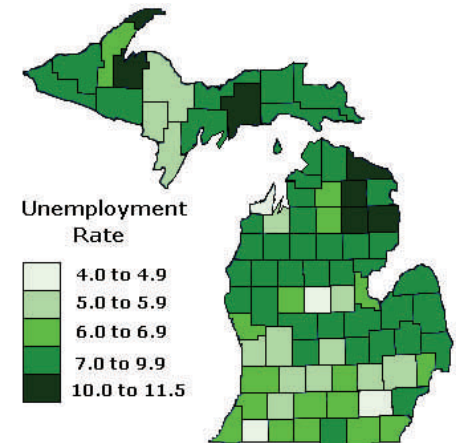
Unemployment Rates 1990 to 2005



Marquette County Unemployed

Year	%	Count
1997	5.7%	1,828
1998	4.7%	1,507
1999	5.1%	1,664
2000	4.3%	1,479
2001	5.4%	1,862
2002	6.8%	2,300
2003	6.5%	2,241
2004	6.0%	2,100
2005	5.6%	1,997

Unemployment Rates by County not seasonally adjusted Michigan Annual 2005



Source: All data on this page is from the Bureau of Labor Statistics.