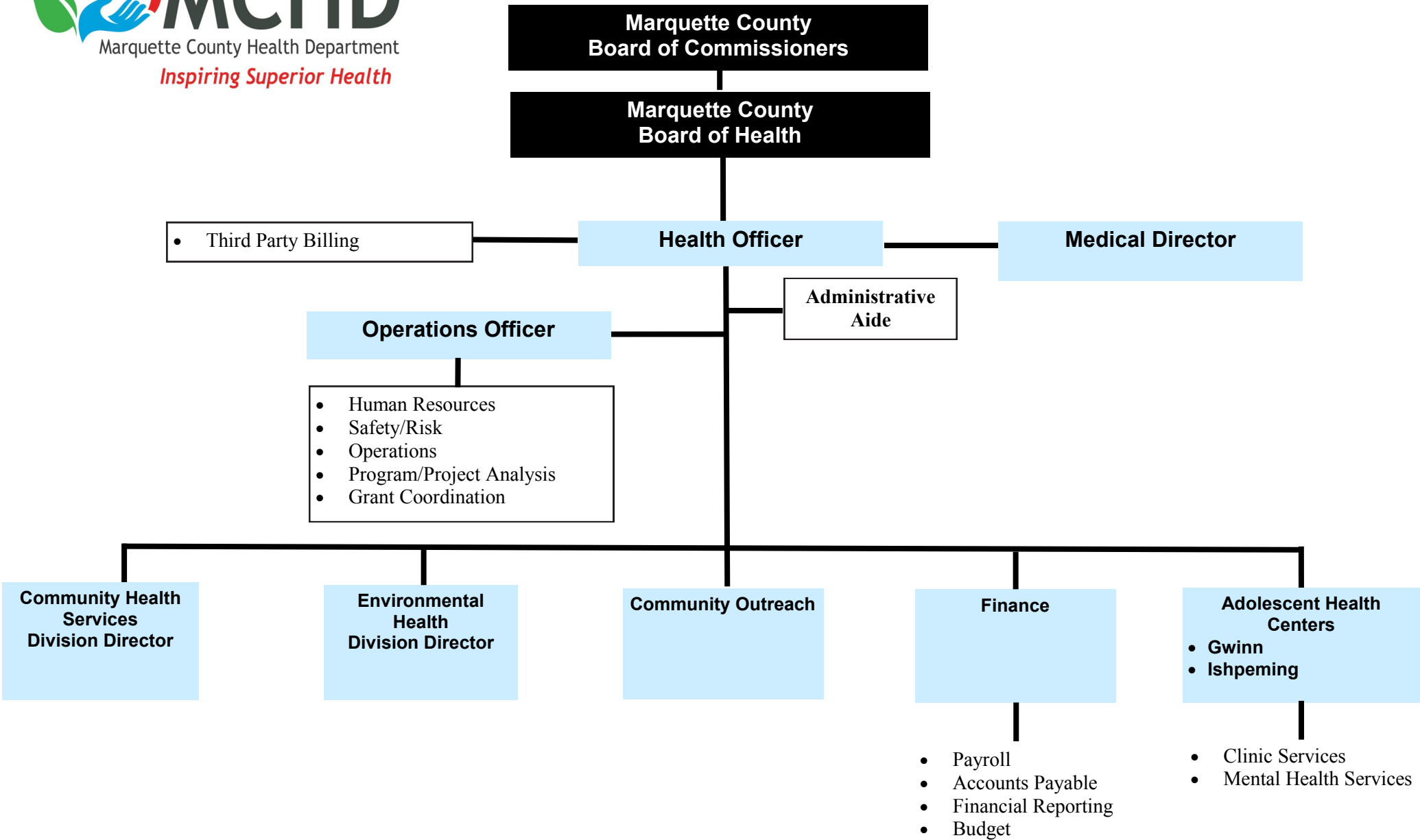




2016 Organizational Chart



# Community Health Programs

## **Care/Case Management:**

- Children's Special Health Care Services
- Continuum of Care
- Early On
- Family Support Services
- Home Visiting Initiative
- Maternal/Infant Health Program
- Pregnant and Parenting Teens

## **Children's Health:**

- Hearing
- Vision
- Women's Infant and Children (WIC)

## **Clinic Services:**

- Breast and Cervical Cancer Prevention Program
- Family Planning
- Immunizations

## **Communicable Disease:**

- Communicable Disease
- HIV Counseling and Treatment/Tobacco Reduction/Housing Opportunities for Persons with HIV/AIDS
- Sexually Transmitted Disease



## Environmental Health Programs

- General Environmental Health
- Food Service
- On-Site Sewage
- Campgrounds
- Private Water
- Type II Water



## Community Outreach Programs

- Oral Health
- Substance Abuse Prevention
- Suicide Prevention
- Emergency Preparedness



## 2016 Board of Health

**James Alderson - Public Member - Chairman**

**Kim Alanko - Public Member**

**Robert Kulisheck - PhD, Public Member**

**William Nordeen, JD - County Commissioner Liaison**

**Karlyn Rapport - Public Member**

**Arthur Saari, MD - Doctor of Medicine**

**Harvey Wallace, PhD - Public Member**

## 2016 Leadership Team

**Gerald Messana - Health Officer**

**Dr. Teresa Frankovich - Medical Director**

**Bill Matson - Operations Officer**

**Bobbie Champion - Community Health Division Director**

**Patrick Jacuzzi - Environmental Health Division Director**

