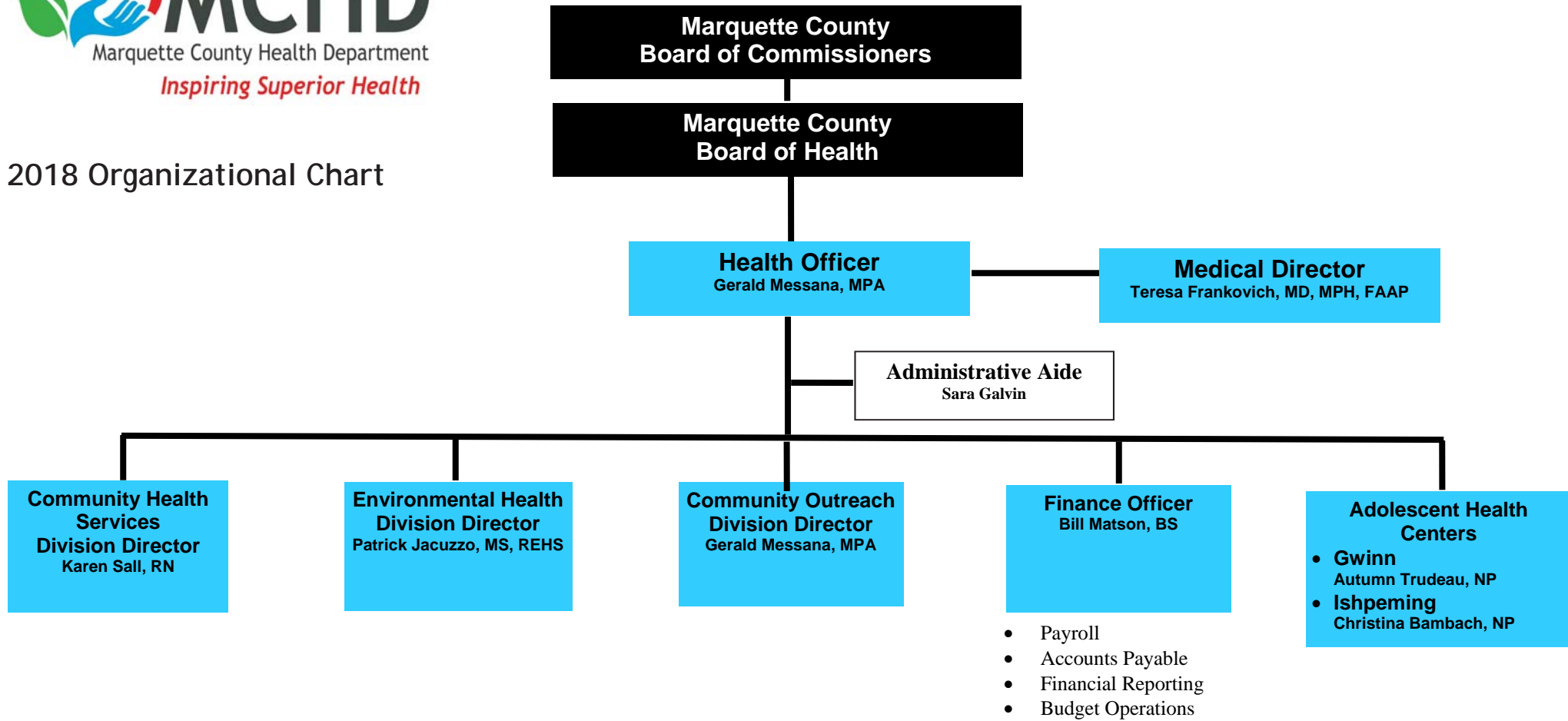




## 2018 Organizational Chart



## Community Health Programs

### Care/Case Management:

- Children's Special Health Care Services
- Continuum of Care
- Early On
- Family Support Services
- Healthy Families U.P.—Home Visiting Initiative
- Maternal/Infant Health Program
- Maternal/Child Health Program
- Pregnant and Parenting Teens

### Children's Health:

- Breastfeeding Peer Counseling
- Hearing
- Vision
- Women's Infant and Children (WIC)

### Clinic Services:

- Breast and Cervical Cancer Prevention Program
- Family Planning
- Immunizations

### Communicable Disease:

- Communicable Disease
- HIV Counseling and Treatment/Tobacco Reduction\ Housing Opportunities for Persons with HIV/AIDS
- Sexually Transmitted Disease

## Community Outreach Programs

- Emergency Preparedness
- Healthy Kids U.P.
- Oral Health
- Substance Abuse Prevention
- Suicide Prevention



## Environmental Health Programs

- General Environmental Health
- Food Service
- On-Site Sewage
- Campgrounds
- Private Water
- Type II Water

## 2018 Board of Health

**Marie Aho, PhD - Public Member**

**Kim Alanko - Public Member**

**Robert Kulisheck, PhD - Public Member—Vice-Chair**

**William Nordeen, JD - County Commissioner Liaison**

**Karlyn Rapport - Public Member**

**Arthur Saari, MD - Doctor of Medicine**

**Harvey Wallace, PhD - Public Member—Chair**

## 2018 Administrative Team

**Gerald Messana - Health Officer**

**Dr. Teresa Frankovich - Medical Director**

**Bill Matson - Finance Officer**

**Patrick Jacuzzo - Environmental Health Division Director**

**Bobbie Champion - Community Health Division Director**

**Karen Sall - Community Health Division Director**

