

# COVID-19 Vaccination Strategy

The COVID-19 vaccine will be distributed in a phased approach.

Phase 1A began in December, 2020. 1B has been authorized to begin on January 11, 2021, and 1C will be prioritized in early 2021. Phase 2 can expect to be eligible by mid-2021.

## Phase 1A: Healthcare Workers and Long-term Care Residents

- 1A Priority One: Healthcare Personnel
- 1A Priority Two: Staff and residents at Long-term Care Facilities
- 1A Priority Three: All other direct and indirect patient care workers (e.g. dentists, urgent care, outpatient)



## Phase 1B: Frontline Essential Workers & Adults 65+

This includes: Education Sector, Food & Agriculture, Utilities, Police, Firefighters, Corrections Officers, Transportation

## Phase 1C: Other Essential Workers and High-risk Population

This includes: Individuals 16-64 years of age with underlying medical conditions with high-risk medical conditions

## Phase 2: Individuals 16-18 years or older (based on manufacturer's recommendations)

This includes: All individuals who did not otherwise fit into the earlier groups for whom the vaccine is recommended



MCHD COVID-19 Hotline:  
(906) 475-9977  
[www.mqthealth.org](http://www.mqthealth.org)

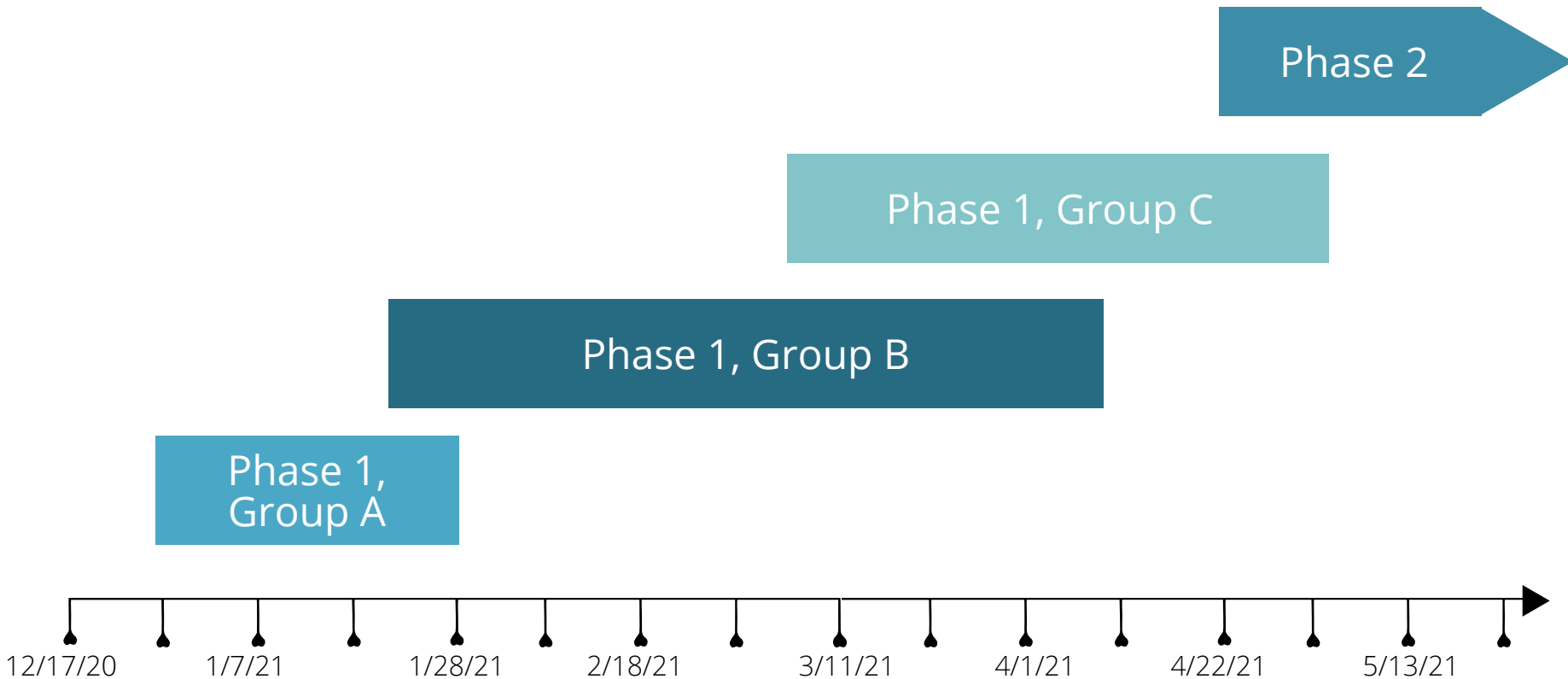
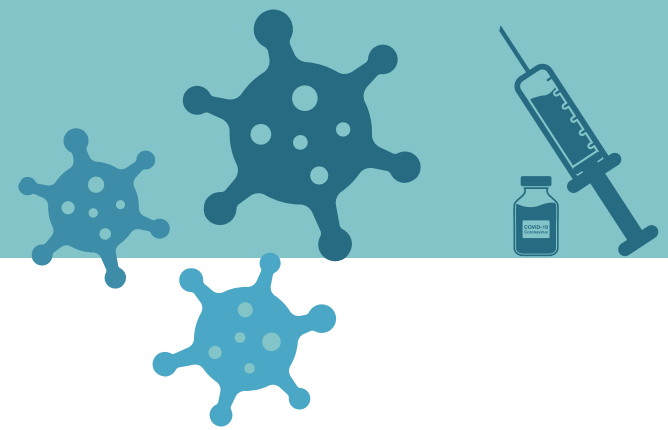
Visit [www.michigan.gov/COVIDVaccine](http://www.michigan.gov/COVIDVaccine)  
for more vaccine information

# COVID-19 Vaccine

## When will it be available to you?

MCHD is working quickly to vaccinate all those who want the COVID-19 Vaccine, following the prioritization guidelines set by ACIP and the state.

**We do not have exact dates when the vaccine will be available to each group, but this is our current estimate and is subject to change.**



COVID-19 Hotline  
(906) 475-9977

For the most up to date information  
[www.mqthealth.org](http://www.mqthealth.org)

